



## Pipeline Clamps – Hot Tap



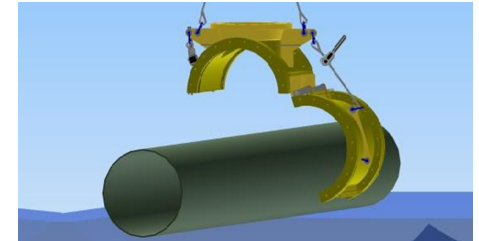
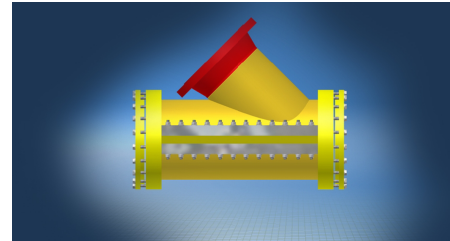
### Introduction

IK design and deliver clamps for piping and pipelines. The clamps can be designed for a large variety of dimensions and pressure classes and for several purposes such as tie in, hot tap, repair, reinforcement. etc.

- **Pipe dimensions:** ½" – 36"
- **Design pressure:** 0 – 600 bar
- **Sealing philosophy:** Single or double w. test port
- **Material:** Customer design
- **Setting:** Torque bolts or hydraulic



## Pipeline Clamps – Hot Tap



Contact for this product is:

: -

